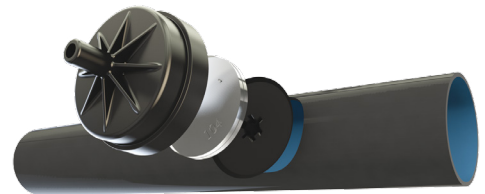




PC DRIPPER

ON-LINE PRESSURE-COMPENSATING,
CONTINUOUSLY SELF-CLEANING DRIPPER



APPLICATIONS

- Greenhouses, nurseries, citrus.
- Orchards, deciduous and tree irrigation.

FEATURES AND BENEFITS

- Pressure compensated: Precise and equal amounts of water are delivered over a broad pressure range. 100% uniformity of water and nutrient distribution along the laterals.
- PC-LCNL & PC-HCNL with Anti-drain (LCNL & HCNL): Eliminates drainage and refill effect, and improves efficiency in pulse irrigation.
- Continuously self flushing: continuously flushing debris, throughout operation, not just at the beginning or end of a cycle, ensuring uninterrupted dripper operation.
- TurboNet™ labyrinth assures wide water passages, large deep and wide cross section improves clogging resistance.
- Dripper can be positioned exactly where required.
- Number of drippers can be increased so as to increase water quantity supply aimed at meeting tree growth rate requirement.
- Allows the installation of "spider assembly," splitting the drip supply into a number of drip outlets.

SPECIFICATIONS

- Recommended filtration: 130 micron / 120 mesh.
Filtration method is to be selected based on the kind and concentration of the dirt particles existing in the water. Wherever sand exceeding 2 ppm exists in the water, a Hydrocyclone is to be installed before the main filter. When sand/ silt/ clay solids exceed 100 ppm, pre treatment will be applied according to Netafim™ expert team's instructions.
- TurboNet™ labyrinth with large water passage.
- To be "inserted" into thick-walled pipes (0.90, 1.00, 1.20 mm)
- Injected dripper, very low CV.
- High UV resistant. Resistant to standard nutrients used in agricultural.
- PC on-line drippers meet ISO 9261 Standards with production certified by the Israel Standards Institute (SII).

DRIPPERS TECHNICAL DATA

PC drippers

FLOW RATE* (L/H)	WORKING PRESSURE RANGE (BAR)	WATER PASSAGES DIMENSIONS WIDTH-DEPTH-LENGTH (MM)	FILTRATION AREA (MM ²)	CONSTANT K	EXPONENT* X	BASE CODE COLOR	CAP COLOR CODE
2.0	0.5 – 4.0	1.17 x 1.07 x 61	2.0	2.0	0	Red	Black
4.0	0.5 – 4.0	1.32 x 1.40 x 60	2.0	4.0	0	Black	Black
8.5	0.5 – 4.0	1.60 x 1.60 x 17	2.0	8.5	0	Green	Black

*Within working pressure range

PC-LCNL drippers

FLOW RATE* (L/H)	WORKING PRESSURE RANGE (BAR)	WATER PASSAGES DIMENSIONS WIDTH-DEPTH-LENGTH (MM)	FILTRATION AREA (MM ²)	CONSTANT K	EXPONENT* X	SHUT OFF PRESSURE (BAR)	BASE CODE COLOR	CAP COLOR CODE
2.0	1.0 – 4.0	1.17 x 1.07 x 61	2.0	2.0	0	0.15	Red	Brown
4.0	1.0 – 4.0	1.32 x 1.40 x 60	2.0	4.0	0	0.15	Black	Brown
8.5	1.0 – 4.0	1.60 x 1.60 x 17	2.0	8.5	0	0.15	Green	Brown

* Within working pressure range

PC-HCNL drippers

FLOW RATE* (L/H)	WORKING PRESSURE RANGE (BAR)	WATER PASSAGES DIMENSIONS WIDTH-DEPTH-LENGTH (MM)	FILTRATION AREA (MM ²)	CONSTANT K	EXPONENT* X	SHUT OFF PRESSURE (BAR)	BASE CODE COLOR	CAP COLOR CODE
3.0	1.4 – 4.0	1.17 x 1.07 x 61	2.0	3.0	0	0.30	Black	Black
6.0	1.4 – 4.0	1.32 x 1.40 x 60	2.0	6.0	0	0.30	Black	Black
12.0	1.4 – 4.0	1.60 x 1.60 x 17	2.0	12.0	0	0.30	Black	Black

* Within working pressure range

DRIPPERS PACKAGE DATA

MODEL	QUANTITY P/BOX (UNITS)	BOX DIMENTIONS (CM X CM X CM)	BOX WEIGHT (KG) AVERAGE
PC and PC-LCNL drippers , flat model	2500	57 x 28 x 27	18
PC , PC-LCNL and PC-HCNL drippers , nipple model	2500	57 x 28 x 27	19