

# NetaJet™ 4G

The NetaJet™ 4G realises Netafim's vision to help farmers grow more with less. Based on Netafim's unique Nutrigation™ technology, it controls the amount of water and fertilizers used, optimising resource utilisation for each specific land type and crop.

Extremely accurate and reliable, prevents water and fertilizer waste while reducing environmental pollution.

Ensures very precise and homogeneous nutrient dosing.



Cost Effective



Good Quality



Ease of  
Maintenance

## Highlights

- ✓ Equipped with the Netafim™ unique innovative analog dosing channels for very accurate and reliable EC/pH control.
- ✓ Provides fast and accurate fertilizer and acid control
- ✓ State-of-the-art technology with unique static mixing chamber
- ✓ Very short control cycle
- ✓ Efficient water, fertilizer and energy consumption
- ✓ Almost completely maintenance-free venturi operations – no moving parts
- ✓ Fast and efficient Nutrigation™ recipe adjustments
- ✓ Multilingual capabilities
- ✓ Made by Netafim™

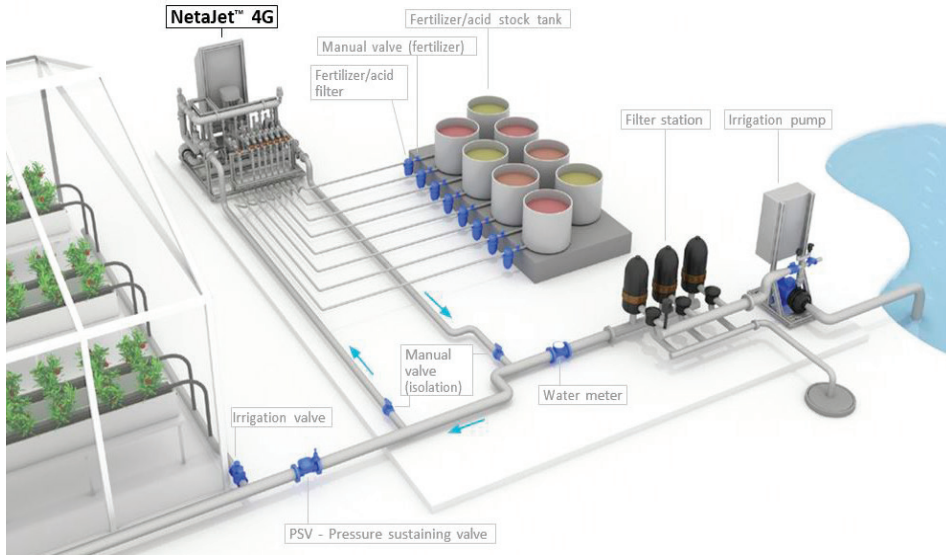
## Benefits

- Easy to install and maintain
- In-house developed offering
- Versatile flow capacity
- Covers all applications ranging from greenhouse in soil, to very intensive soilless media
- Requires minimal investment with rapid ROI
- Accommodates a variety of system pumps, peripherals and accessories



# BP PL, OCTA, HIGH-FLOW MODES

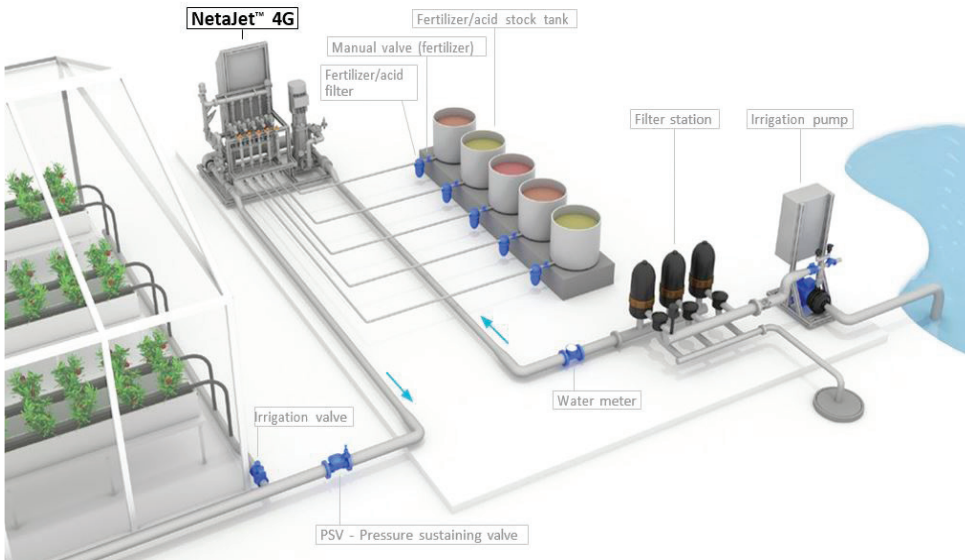
- Bypass systems for pressurised line water source



MODE	SUITABLE FOR MAINLINE		
	FLOW RATE	PRESSURE RANGE	DOSING CHANNELS
BP PL	120 - 20 m <sup>3</sup> /h	<b>Standard:</b> 2.5 - 5.8 bar	Up to 5 x 50 - 600 ℓ/hr
Octa		<b>High pressure:</b> 5.8 - 7.5 bar	Up to 8 x 50 - 600 ℓ/hr
HF	400 - 80 m <sup>3</sup> /h		Up to 5 x 50 - 1000 ℓ/hr

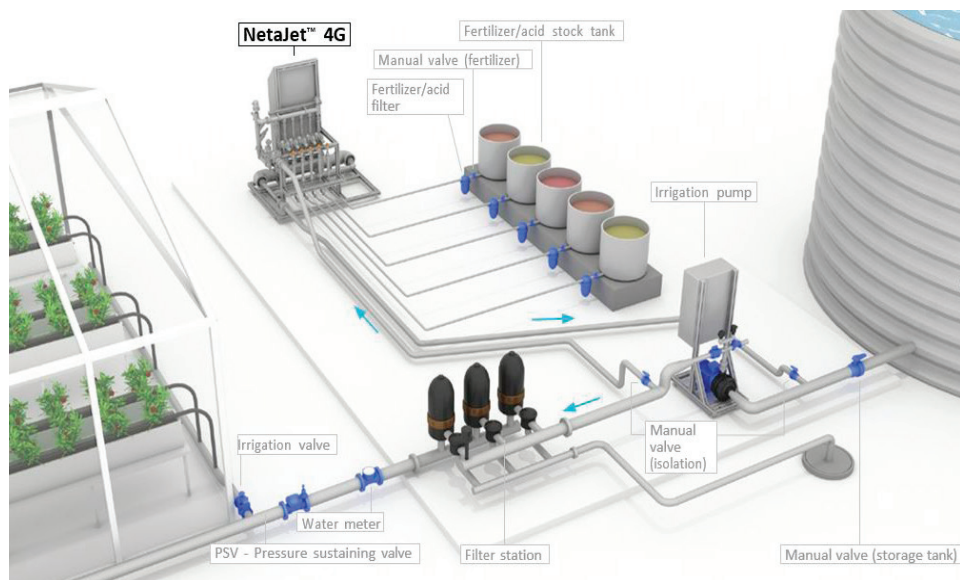
\*Flow limitation depends on the fertilizer injection rate and the size of the venturis.

## IL PL Mode - Inline system for pressurised line water source



MODE	SUITABLE FOR MAINLINE		
	FLOW RATE	PRESSURE RANGE	DOSING CHANNELS
IL PL	Up to 20 m <sup>3</sup> /h	<b>Standard:</b> 2.5 - 5.8 bar <b>High pressure:</b> 5.8 - 7.5 bar	Up to 5 x 50 - 400 ℓ/hr

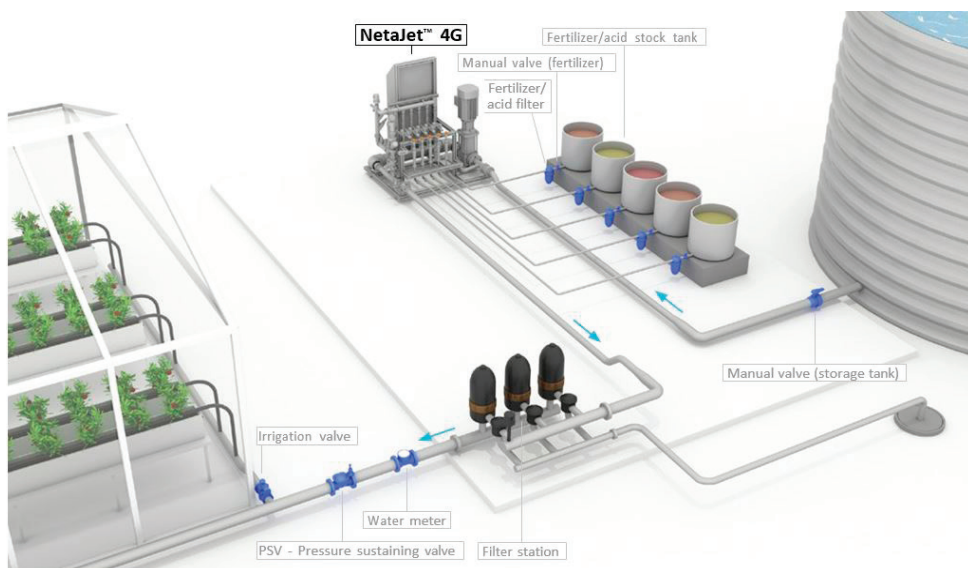
## BP ST MODE - Bypass system for storage tank water source



MODE	SUITABLE FOR MAINLINE		
	FLOW RATE	PRESSURE RANGE	DOSING CHANNELS
BP ST	15 - 100 m <sup>3</sup> /h	Upstream from the pump: 0 - 0.5 bar	Up to 5 x 50 - 600 ℓ/hr

\*Flow limitation depends on the fertilizer injection rate and the size of the venturis.

## IL ST MODE - Inline system for storage tank water source



MODE	SUITABLE FOR MAINLINE		
	FLOW RATE	PRESSURE RANGE	DOSING CHANNELS
IL ST	Up to 20 m <sup>3</sup> /h	Upstream from the pump: 0 - 0.5 bar	Up to 5 x 50 - 400 ℓ/hr

## COMPONENTS

- ✓ HydroMix static mixing chamber
- ✓ A compensation channel with a pressure regulator
- ✓ Factory installed PRV at the inlet and a PSV at the outlet
- ✓ Selectable analog dosing channels
- ✓ Dual EC/pH monitoring and control
- ✓ Quick-action dosing valves
- ✓ Wide range of integrated accessories and peripherals
- ✓ High-quality components and PVC piping
- ✓ Aluminum, corrosion-resistant frame with adjustable legs

## ANALOG DOSING CHANNEL

The NetaJet™ 4G is equipped with the Netafim™ unique innovative analogue dosing channel, the solution for very accurate and reliable EC/pH control for Nutrigation™ of greenhouse high-value crops.

The analogue dosing channel is equipped with a servo motor able of continuous variable opening from 0 to 100%.

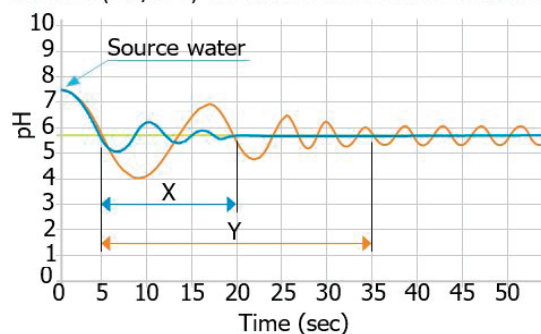
This unique feature allows unprecedented precise and

## ADVANTAGES

- ✓ High precision
- ✓ Smooth and stable hydraulic operation
- ✓ No fluctuations
- ✓ Fast EC/pH set-point reaching
- ✓ Short stabilisation time
- ✓ Enables short nutrigation™ cycles
- ✓ No risk of cavitation damage to the booster

### PERFORMANCES:

#### DIGITAL (ON/OFF) VS. ANALOGUE DOSING CHANNEL



— Analog (continuous-variable) dosing channel  
— Digital (pulsating) dosing channel  
— pH set point

#### STABILISATION TIME

X = Analogue (continuous-variable) dosing channel  
Y = Digital (pulsating) dosing channel