

Fertikit™ 3G PL

FertiKit™ 3G is a fully configurable, cost-effective fertilizer/acid dosing unit system that carries out precise Nutrigation™. Operating in four modes depending on site conditions, FertiKit™ 3G optimises the available water flow rate and pressure usage of the main irrigation line to ensure high efficiency at low cost. This unit brings together over a decade of technological know-how and experience. FertiKit™ 3G maintains a proven track record under the most stringent environmental conditions.



Cost Effective



Good Quality



Ease of
Mintenance

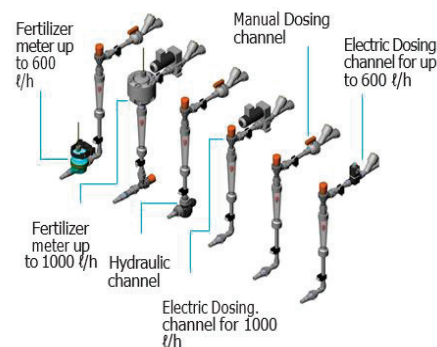
Highlights

- ✓ Modular nutrigation system
- ✓ Wide range of soil/substrate applications
- ✓ Built around a standard platform
- ✓ Minimal investment requirement
- ✓ Efficient water, fertilizer and energy consumption
- ✓ Unrivaled range of irrigation water capacities
- ✓ Quantitative or proportional nutrigation capabilities
- ✓ Guaranteed EC and pH control
- ✓ Almost completely maintenance-free venturi operations – no moving parts
- ✓ Highly accurate dosing channels
- ✓ Fast and efficient nutrigation recipe adjustments
- ✓ Manual or fully automated operations
- ✓ Easy integration into existing irrigation systems, Netafim's NMC, and third-party controllers

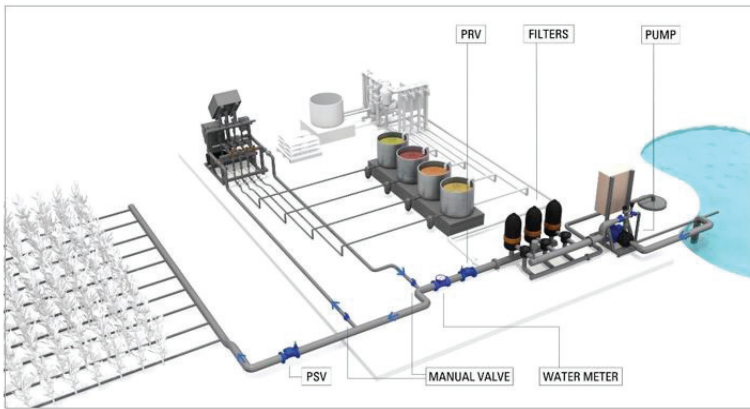
Benefits

- Easy to install and maintain system
- In-house developed offering
- Broad application including open fields, orchards etc.
- Very good price/performance ratio

Fertikit™ 3G Dosing Channels Range



→ TYPICAL INSTALLATION



→ COMPONENTS

- ✓ Quick-action dosing valves
- ✓ Wide range of integrated accessories and peripherals
- ✓ High-quality components and PVC piping
- ✓ Aluminum, corrosion-resistant frame with adjustable legs

→ CAPABILITIES

- ✓ Versatile flow capacity: from 0.1 Ha (nursery) to 400 Ha (suitable for sugarcane plantations, and all other field crops and orchards)
- ✓ Up to 6 x highly accurate 50 – 1 000 ℓ/hour fertilizer/acid dosing channels

* For applications requiring over 6 dosing channels, please contact Netafim.

| FEATURES | STANDARD | OPTIONAL |
|-----------------|---|---|
| Controller | NMC – PRO, NMC-XL, NMC-JUNIOR According to customer need | Other controllers in the market or manual system without controller |
| EC/pH Control | Single measurement | None |
| Flow Rate | 20 – 700 m ³ /hour | |
| Dosing Channel | Up to 6 x 50 - 1000 ℓ/hour | Concentrated Acid channel x 50 ℓ/hour |
| System Pressure | 2.5 – 6.5 Bar | Up to 9 Bar |