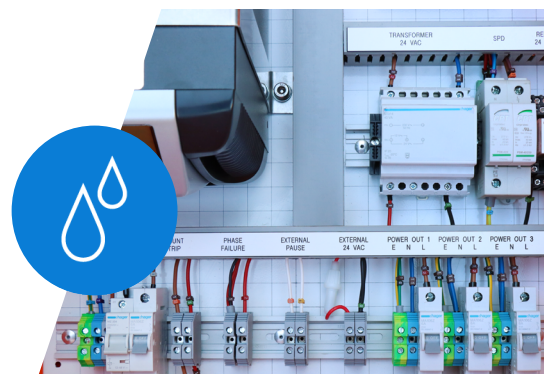


# IRRIGATION UPS



## PRODUCT SHEET

The Irrigation UPS is installed before electrical equipment to protect sensitive equipment. Power-related threats from external sources can damage electrical equipment and lead to breakdowns and losses. Having an Irrigation UPS installed provides peace of mind during power instabilities, but do not offer continues power as a generator would do. It will merely assist with the switch-over process, ensuring constant clean power to devices.

The Irrigation UPS uses various components to create optimal electrical protection within a feasible range. This includes double conversion technology and surge protection devices. It also includes features suitable to typical irrigation controllers and head control rooms.

## Product Specifications

- ✓ Assembled in a ventilated metal enclosure.
- ✓ Includes two long thin brackets to prevent backplate bending and allow bolt fastening with easy accessibility. Easy access to the fastening bolts is important in case the UPS must be removed for battery replacement or maintenance.
- ✓ Durable labels and wire numbers for easy component identification.
- ✓ Includes an electrical schematic diagram in line with component labels and wire numbers.
- ✓ Hager Din Rail transformer.
- ✓ 1000 VA True Online UPS – double conversion technology.
- ✓ 24VAC Shunt breaker.
- ✓ 275V Surge protection devices.
- ✓ Shunt trip to prevent unprotected power output when SPDs become worn.
- ✓ Phase Failure - Dry Contact input from 3-phase power phase failure device, indicating power problems from the 3-phase power line.
- ✓ External Pause – Dry Contact output to controller, for when there is a power phase fault, such as incorrectly matched phases or failures. Will pause controller, until corrected.
- ✓ 3 x 230 VAC outputs with independent breakers.
- ✓ 24VAC Auxiliary output, with 1.25Amp fused – for additional low power devices such as a NetaPulse, Flush Timer, etc.

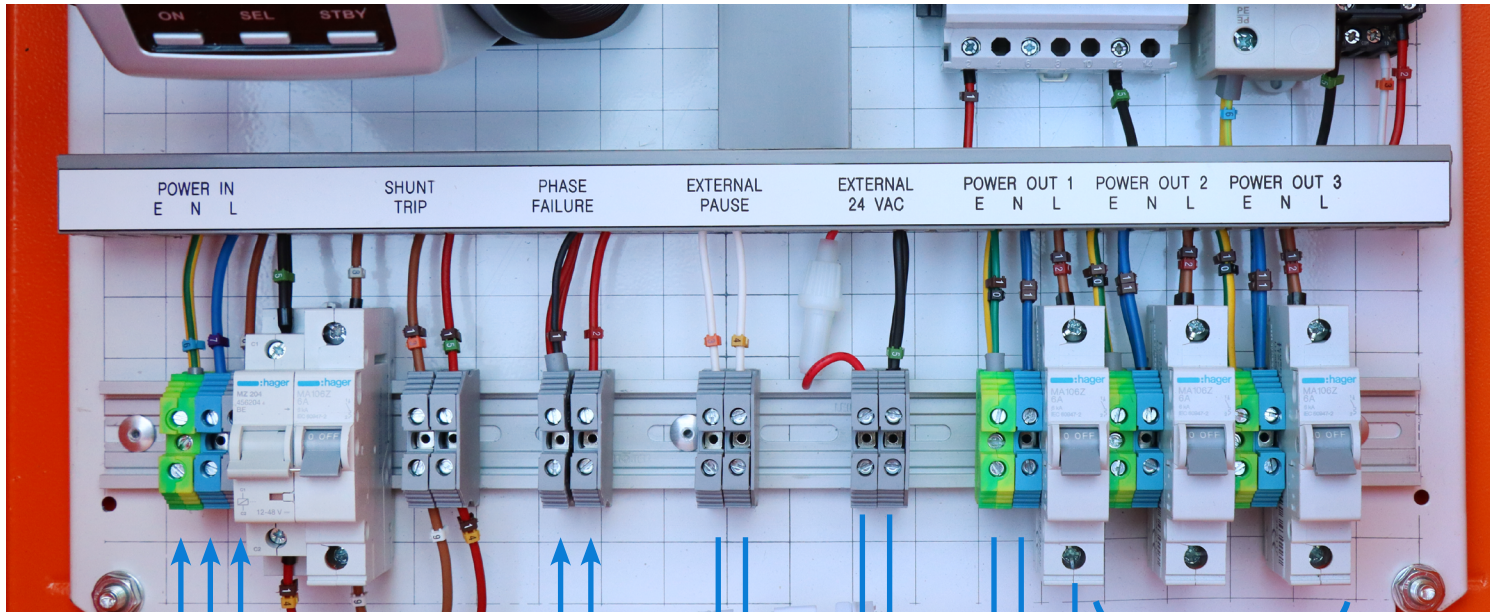


**Note:** Image shows UPS with CVT included

## Important Information

- ✓ In areas where power supply is very unstable and fluctuations are common, it is advisable to add a CVT device for additional protection, and to prolong optimal product operation.
- ✓ Installation of UPS enclosure must be indoors, protected from weather and water.

CATALOGUE NUMBER	DESCRIPTION
00255-007176	Irrigation UPS True Online
00255-007190	Add - Voltage stabiliser (CVT) to UPS



Power IN  
Eskom 1 phase

Phase Failure Input from  
External 3 Phase Failure Relay  
NOT supplied by NETAFIM

Controller  
Digital Input  
External Pause

External low power  
devices such as Flush  
Timer, NetaPulse etc.

230VAC Power  
OUT to Controller  
or injection unit

2 x Extra Power OUT  
RadioNet, Flush Timer etc.

## 3-PHASE INJECTION UNIT CONNECTION

If injection unit is used without UPS:

3 & 4 bridged

If used with UPS:

remove bridge and connect POWER OUT 1  
as EXTERNAL SUPPLY

